



# NUMBER OF EMPLOYEES IN THE PUBLIC ADMINISTRATION

2019

622 443

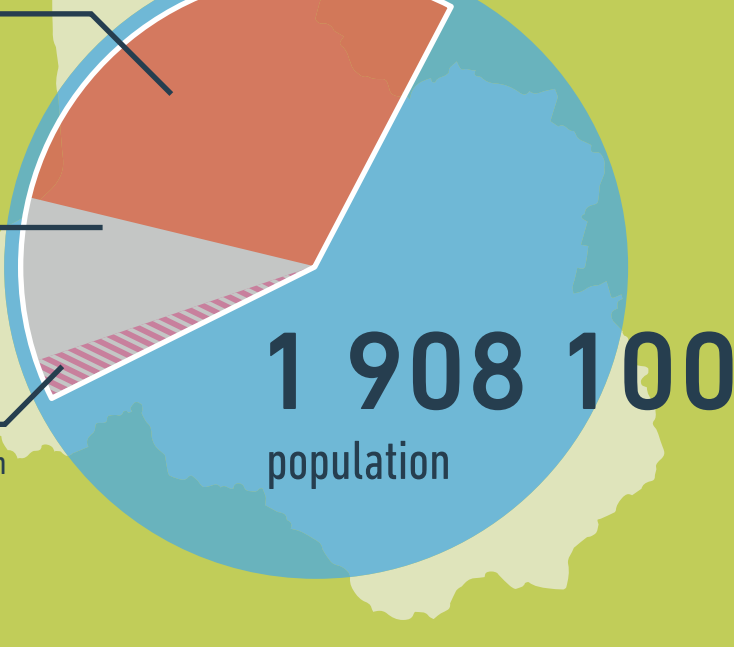
Private sector employees

290 065

Public sector employees

60 251

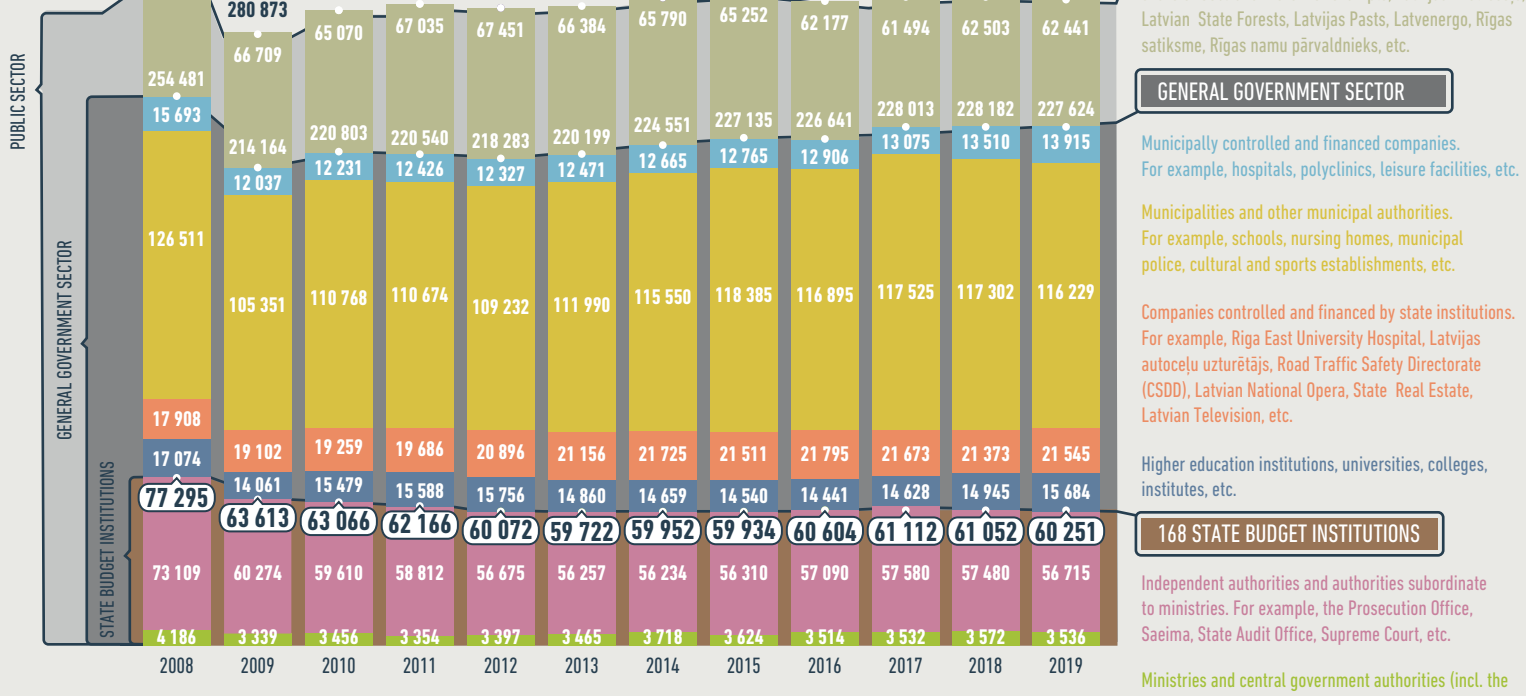
60 251 or ~ 3.2% of the Latvian population works in state budget institutions



Source: Central Statistical Bureau data on the 4th quarter of 2019

## NUMBER OF EMPLOYEES IN THE STATE BUDGET INSTITUTIONS HAS DECREASED SINCE 2008

-22%



Source: Central Statistical Bureau data on the 4th quarter of 2019

## ~ 50% OF EMPLOYEES IN THE GENERAL GOVERNMENT SECTOR WORK IN MUNICIPALITIES AND SUBORDINATE INSTITUTIONS

Municipalities, municipal institutions 116 229

State budget institutions 60 251

State - controlled and financed enterprises 21 545

Municipally controlled companies 13 915

Higher education institutions, universities, academies, colleges, institutes, etc. 15 684

Nearly half of employees of the state budget institutions are police officers, soldiers, educators, medical practitioners, prosecutors and judges who are usually not associated with the public administration.

Civil servants 11 304

Project managers, specialists, support staff 17 256

Officials with a special service rank (e.g. police officers, firefighters) 11 704

Teachers in vocational education and training institutions 3 631

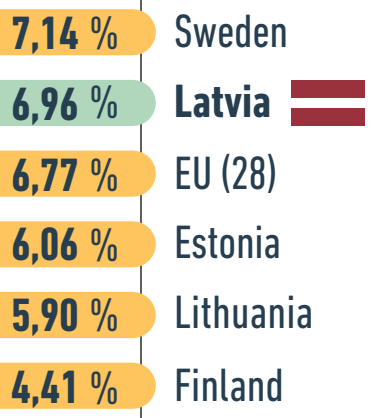
Employees of social care centres 2 854

Medical practitioners 2 482

Prosecutors, judges 1 043

Members of the Saeima 100

Proportion of employees in public administration in 2019. Percentage of the total number of employees in the country

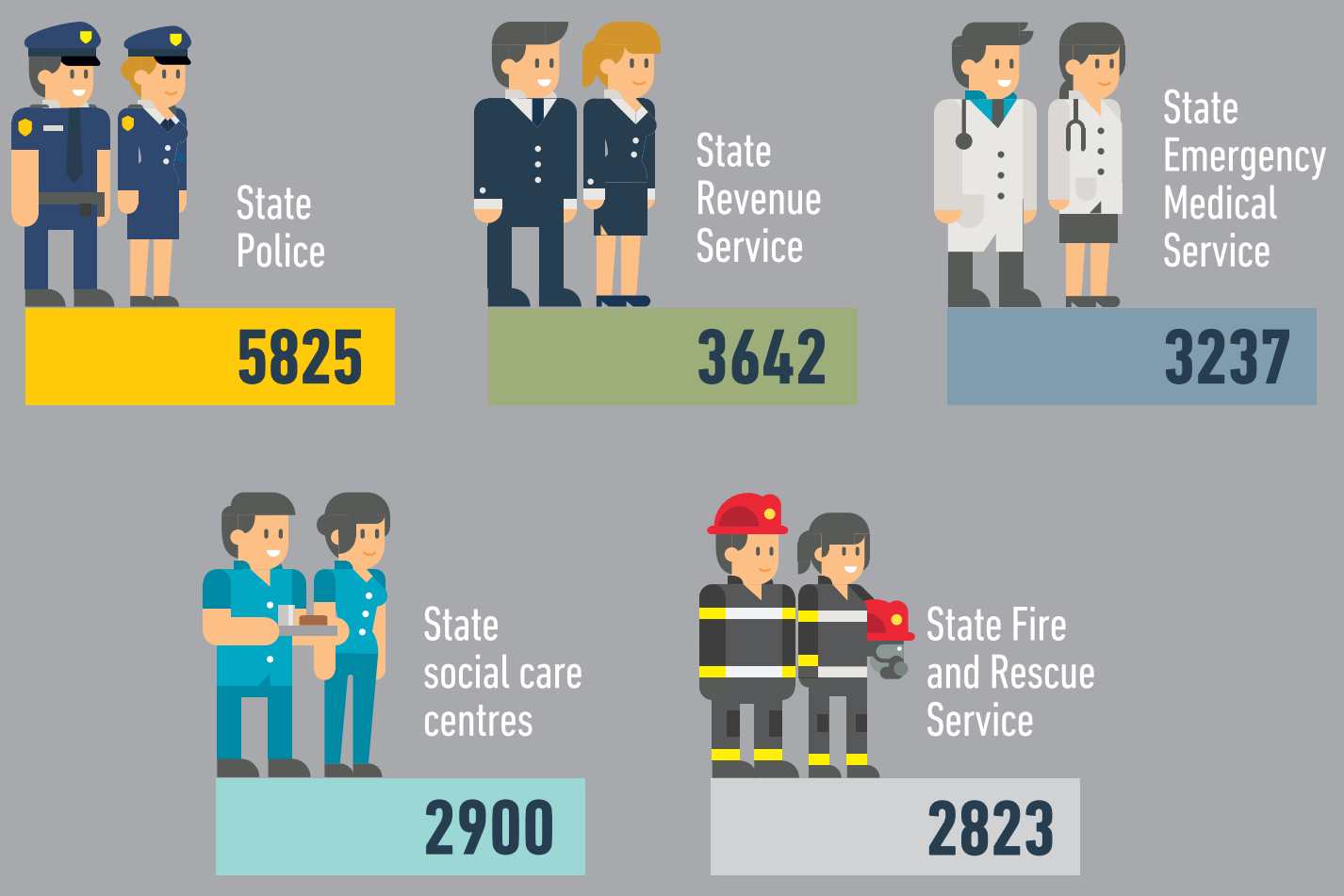


Source: State Chancellery's data on the 4th quarter of 2019

Source: Eurostat data 2020

## LARGEST STATE BUDGET INSTITUTIONS, BY NUMBER OF EMPLOYEES

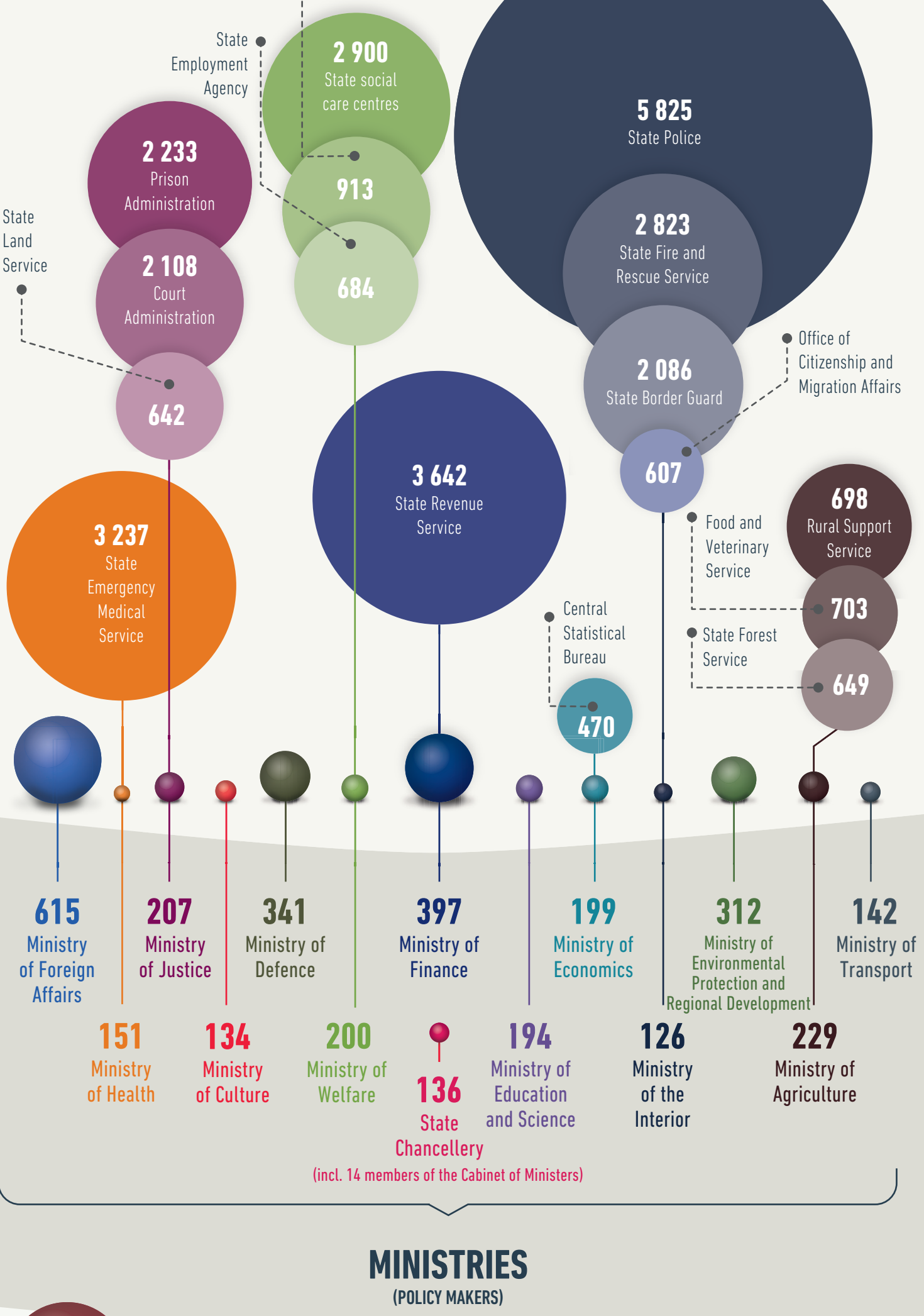
# TOP 5



Source: Central Statistical Bureau data on the 4th quarter of 2019

## LARGEST STATE BUDGET INSTITUTIONS (POLICY IMPLEMENTERS)

MAJORITY OF EMPLOYEES TAKE CARE OF SAFETY AND SOCIAL PROTECTION OF THE POPULATION



## MINISTRIES (POLICY MAKERS)



## LARGEST INDEPENDENT INSTITUTIONS

Source: Central Statistical Bureau data on the 4th quarter of 2019

© State Chancellery of Latvia, 2020